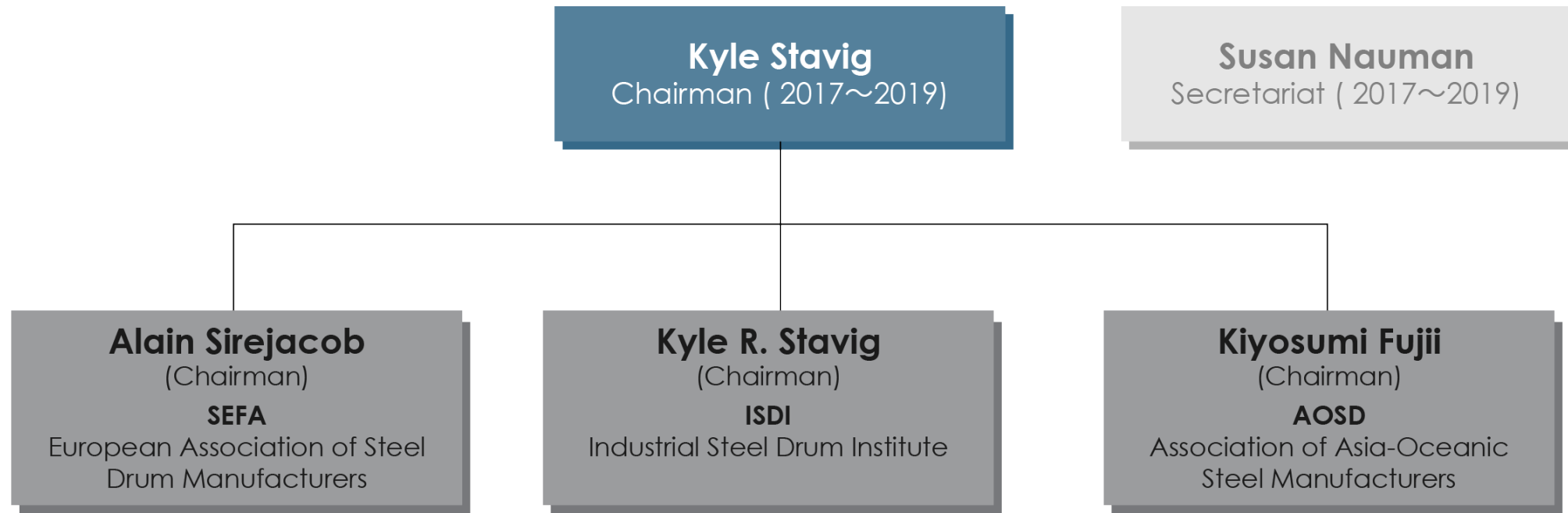


# International Confederation of Drum Manufacturers



# ICDM Responsibilities

## EUROPE, MIDDLE-EAST, AFRICA

## THE AMERICAS

## JAPAN, ASIA-OCEANIC

### ICDM Board members

Alain Sirejacob (Chairman SEFA)  
Domenico Rinaldini (Vice Chairman SEFA)

Kyle R. Stavig  
Chairman ISDI

James Beardsley  
Vice chairman ISDI

Kiyosumi Fujii  
Chairman JSDA & AOSD

Ryu Kihyung  
Vice Chairman AOSD

### ICDM representatives to UN-related issues

#### NOMINATED TO UN

Jörg Höppner  
Sec. Gen. SEFA

#### DEPUTY

Niko Tessin  
Sec. Gen. SEFA

#### DEPUTY

Susan Nauman  
Ex. Dir. ISDI

#### DEPUTY

Chris Lind  
Alternative

#### DEPUTY

Nobuhiro Honda  
Sec. Gen. AOSD & ICDM

### ICDM Legal Counsel

Glenn Wicks  
Legal Counsel ISDI

Toshiaki Tada  
Legal Counsel JSDA

### ICDM Website

Susan Nauman  
Ex. Dir. ISDI

### Association Executives

Jörg Höppner  
Sec. Gen. SEFA

Niko Tessin  
Sec. Gen. SEFA

Susan Nauman  
Ex. Dir. ISDI

Nobuhiro Honda  
Sec. Gen. AOSD & Ex.Dir./Sec. Gen. JSDA

### General Affairs

Domenico Rinaldini  
Vice Chairman SEFA, Chairman SEFA  
WG Marketing & Steel

Kyle R. Stavig  
Chairman ISDI Marketing WG

Masao Wakasugi  
Chairman JSDA General Planning  
& Statistics Committee

### Technical Affairs

Berend Golterman  
Vice Chairman SEFA, Chairman SEFA  
WG Regulatory & Technical

Chris Lind  
Chairman ISDI Technical Projects Committee

Mikito Kihara  
Chairman JSDA Technical Committee